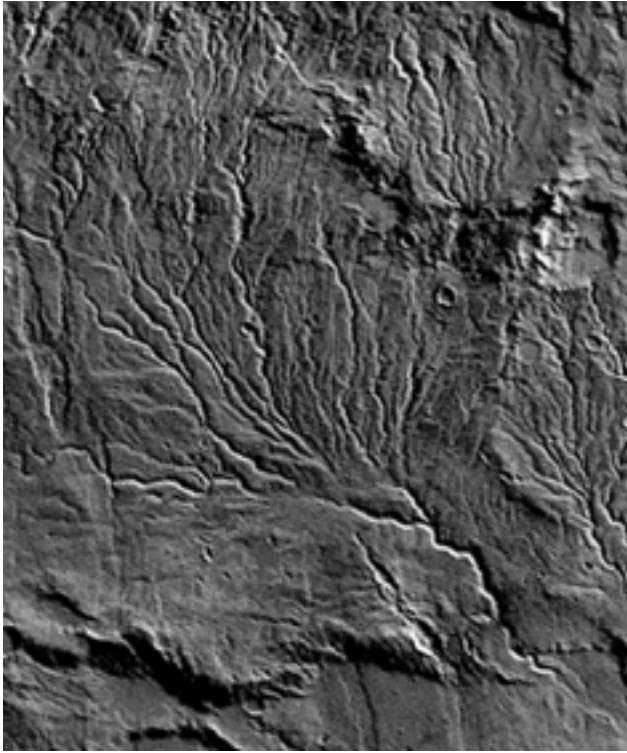
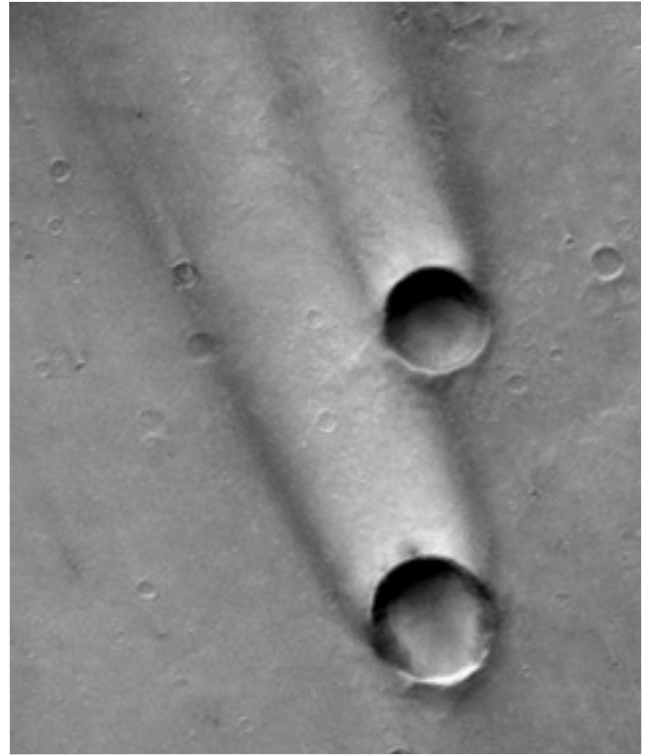


# Planet Surface Features

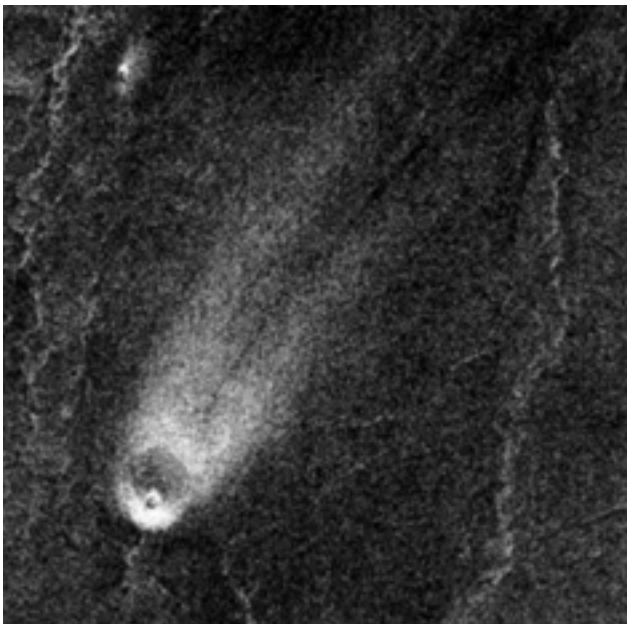
Use the sand and trays to model features that are formed by water and wind.  
For each of the planet and moon images below, were they formed by a **liquid** or **wind**?



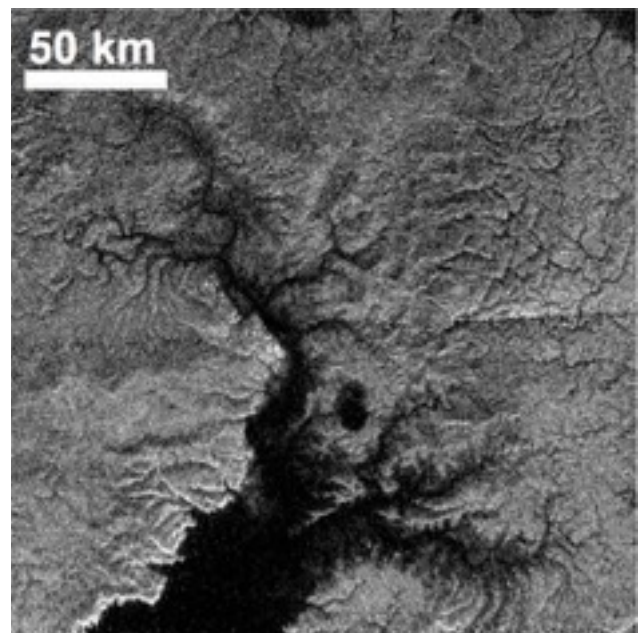
Mars feature formed by \_\_\_\_\_



Mars feature formed by \_\_\_\_\_



Venus feature formed by \_\_\_\_\_



Titan (Saturn moon) feature by \_\_\_\_\_